

**MEMPHIS AND
SHELBY COUNTY**  **DIVISION OF PLANNING
AND DEVELOPMENT**

City Hall – 125 N. Main Street, Suite 468 – Memphis, Tennessee 38103 – (901) 636-6619

**MEMPHIS LANDMARKS COMMISSION
CERTIFICATE OF APPROPRIATENESS**

TO: Kristy Gunn & Michael Evers,
John Harrison Jones Architects (Ezra Elam)

ISSUE DATE: March 4, 2022
DOCKET: COA 2022-011
1508 Goodbar Avenue
Central Gardens HD

Sent via electronic mail to: evergunn@gmail.com; ezra@johnjonesarchitect.com

On March 2, 2022, the Memphis Landmarks Commission ***approved*** your application as a ***MINOR COA*** for New Construction of a ground floor addition (800 sq. ft.) subject to the following conditions:

1. Any change or deviation from the approved Certificate of Appropriateness (COA) shall be submitted to the Memphis Landmarks Commission for review and approval.

Be advised, this COA expires in one (1) year if a permit has not been issued by the Office of Construction Code Enforcement.

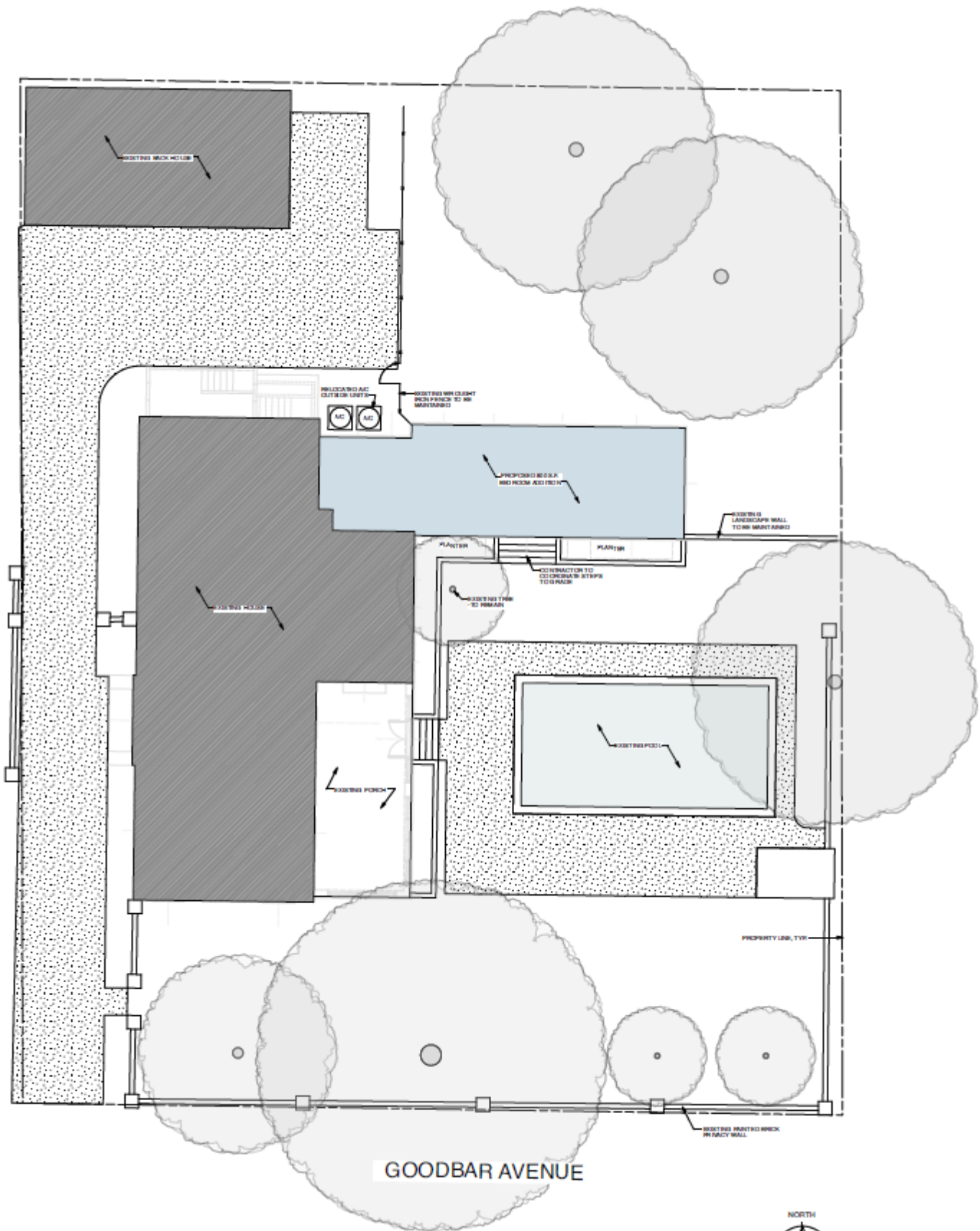
Respectfully,



Ayse Tezel
Municipal Planner
Land Use and Development Services
Division of Planning and Development

Encl: Approved plan(s)

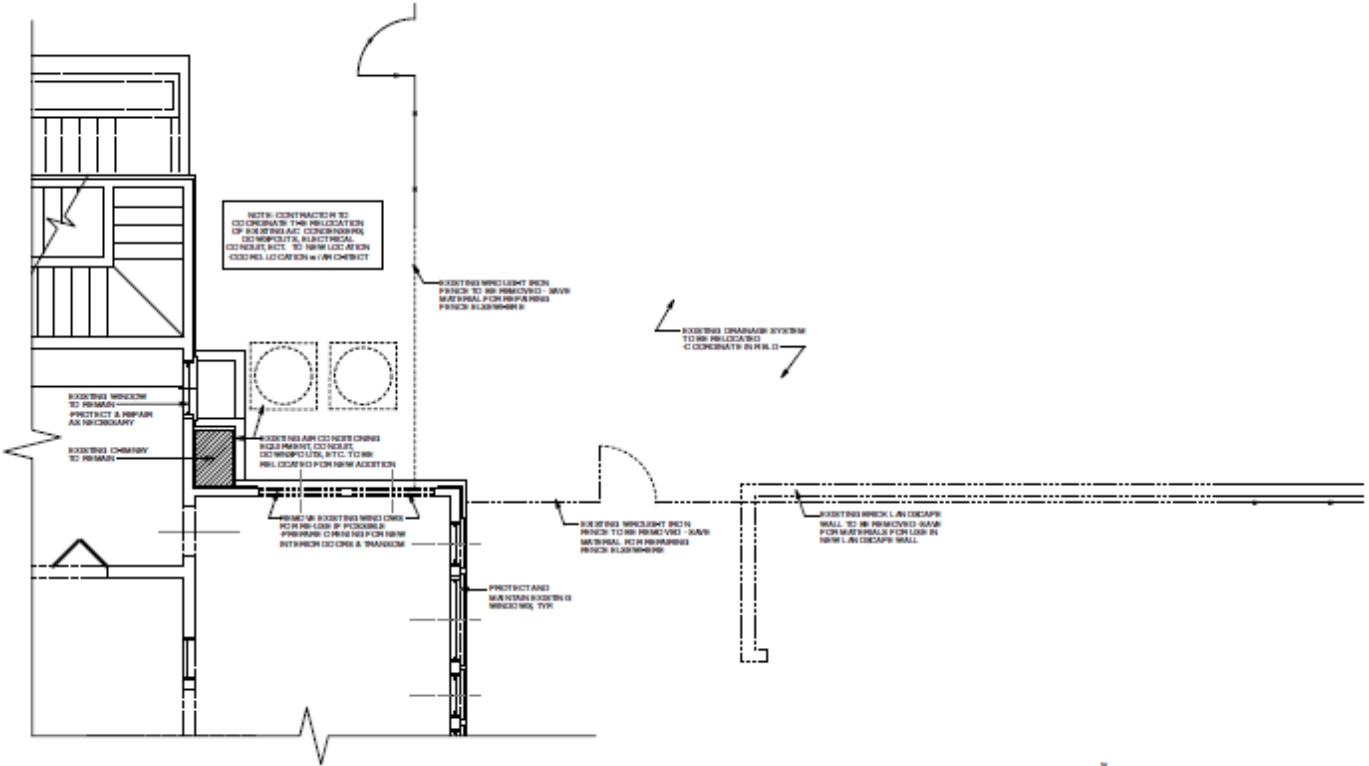
Site Plan



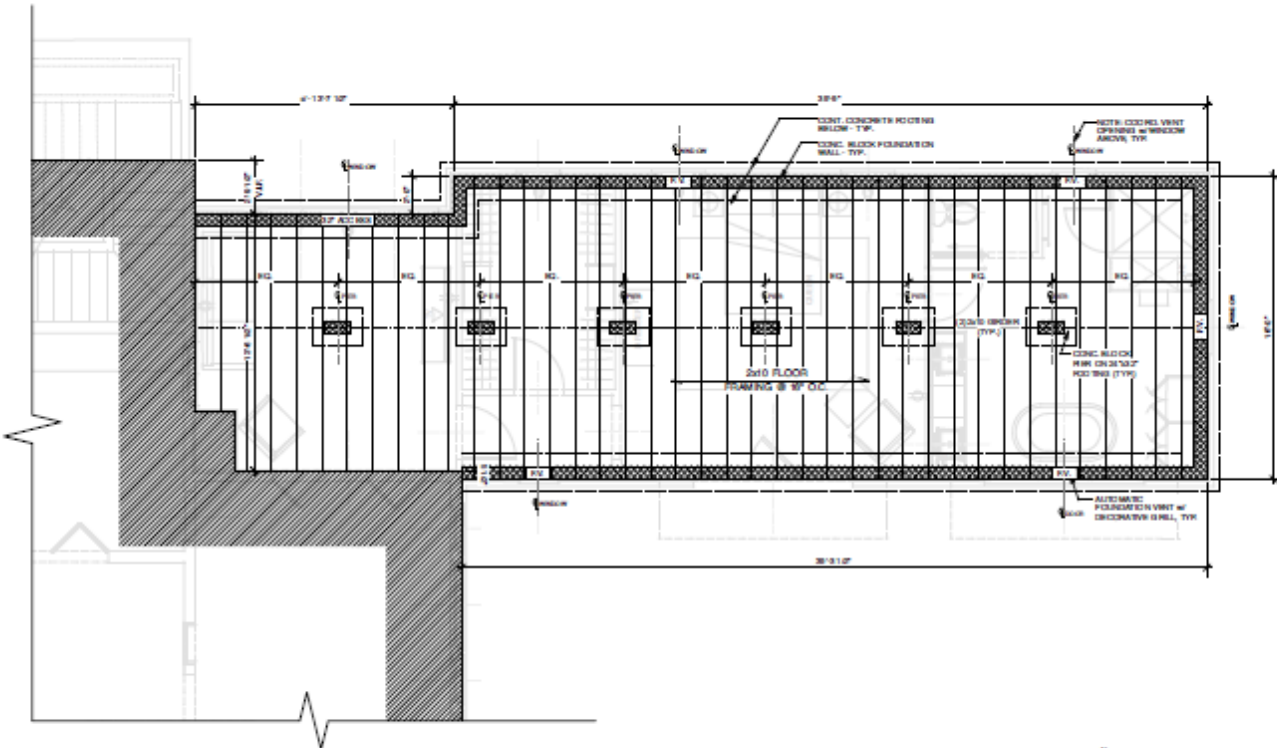
1 PROPOSED SITE PLAN
Scale: 1/8" = 1'-0"



Demolition and Foundation Plan



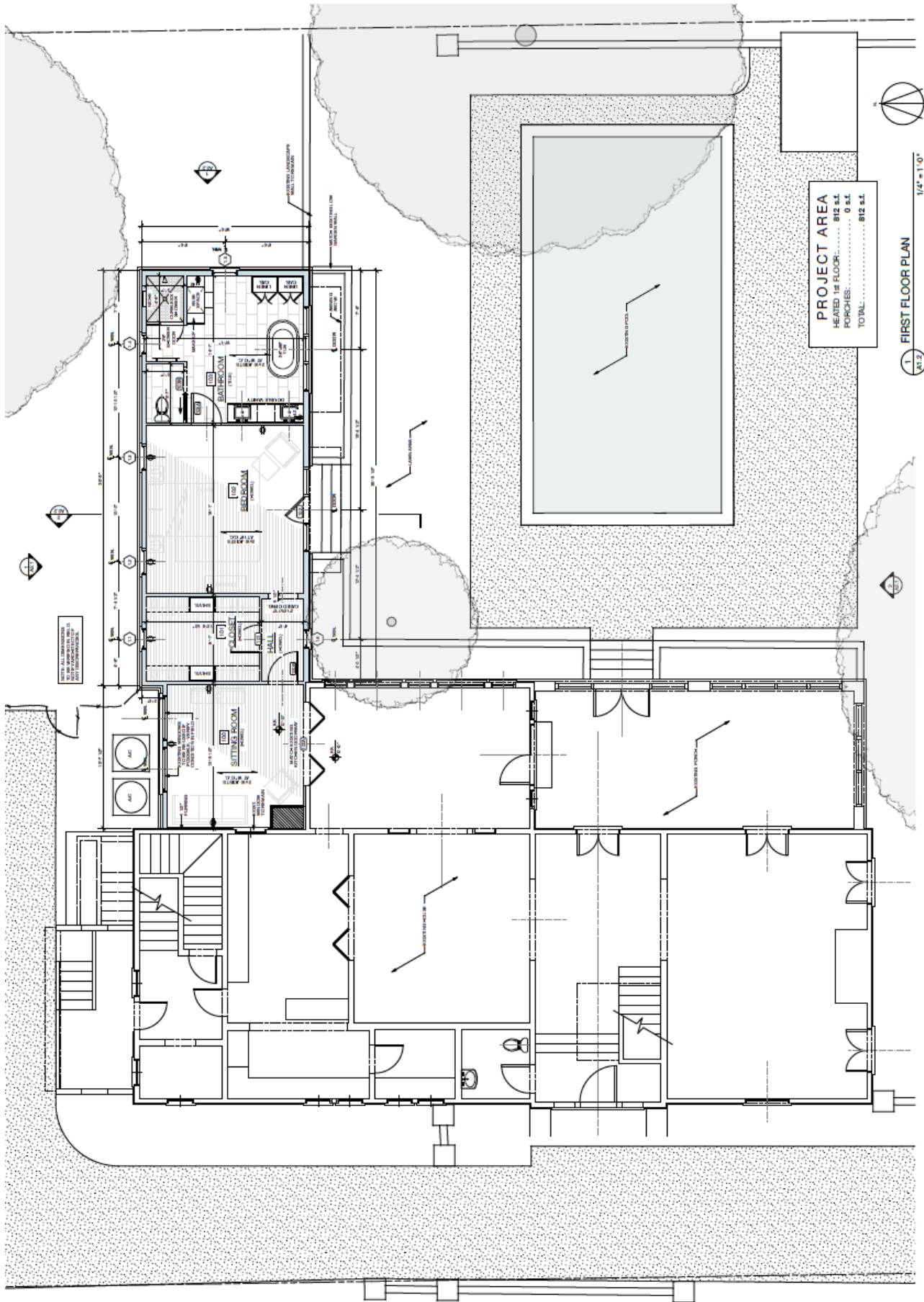
2 DEMOLITION PLAN
A1.1 1/4" = 1'-0"



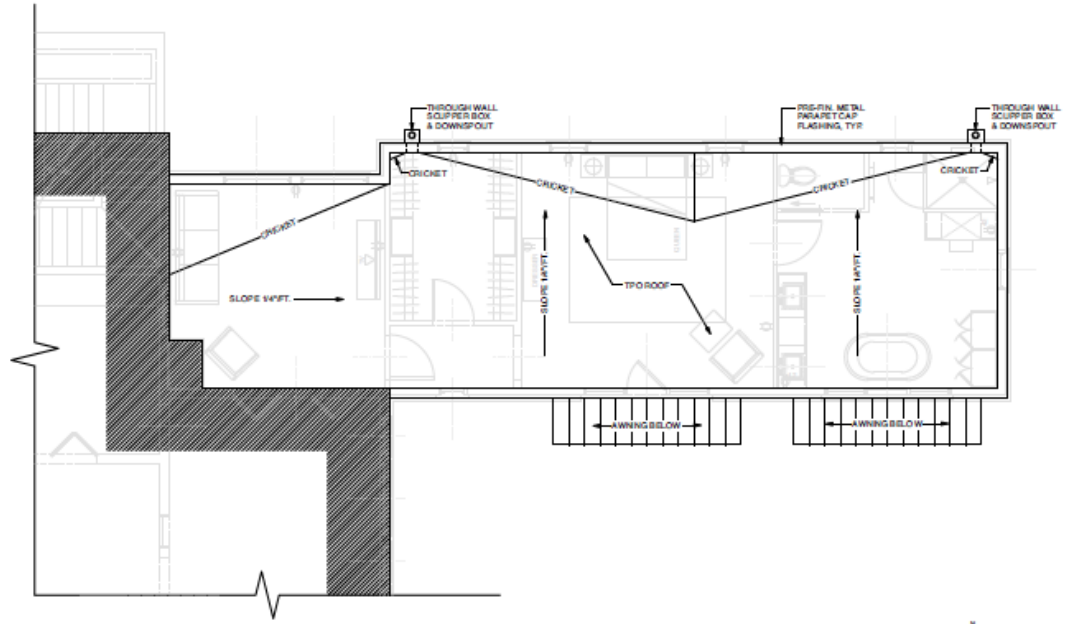
1 FOUNDATION PLAN
A1.1 1/4" = 1'-0"



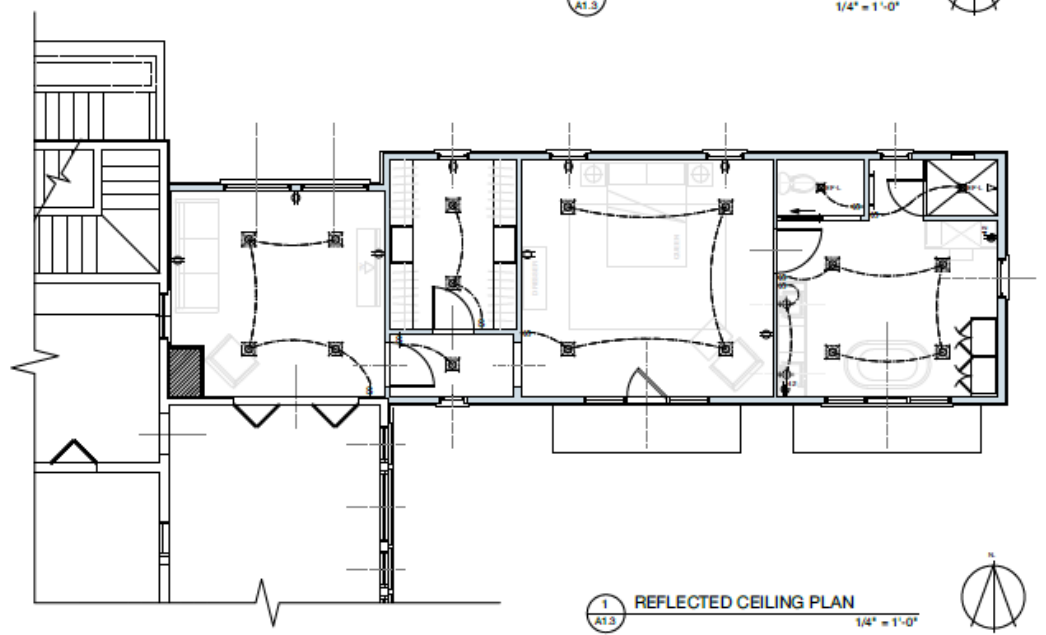
First Floor Plan



Roof Plan



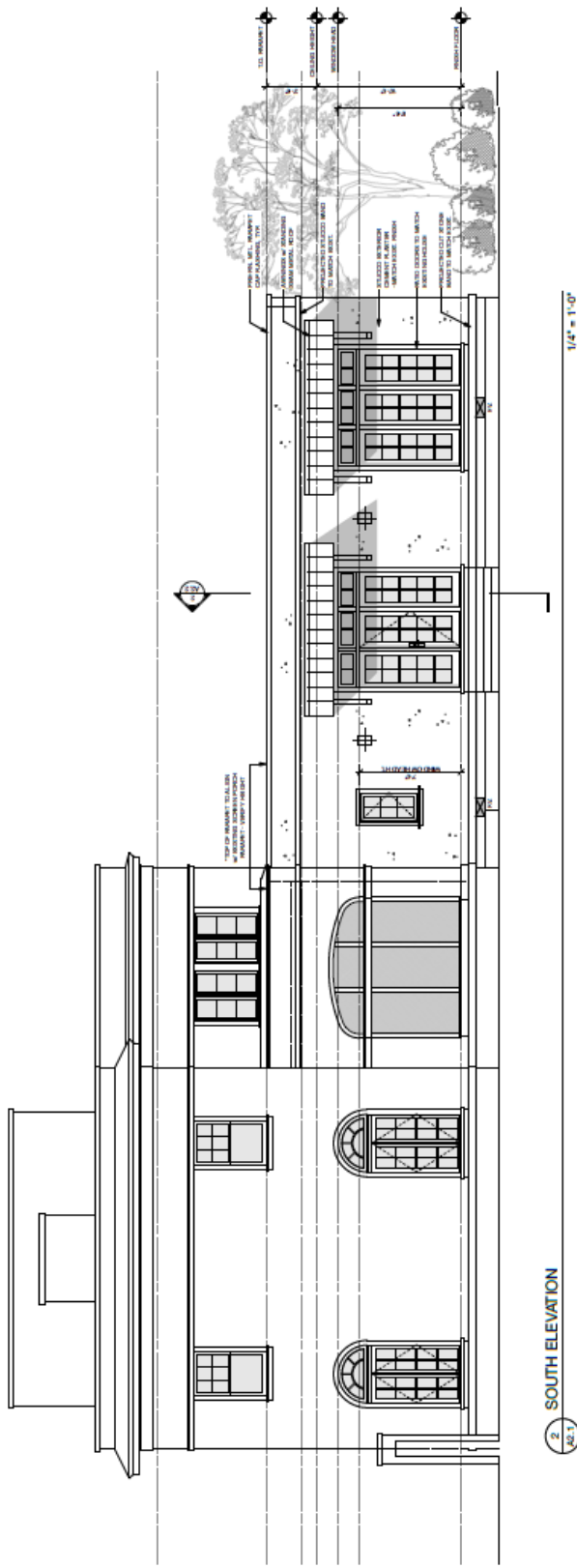
2 ROOF PLAN
1/4" = 1'-0"



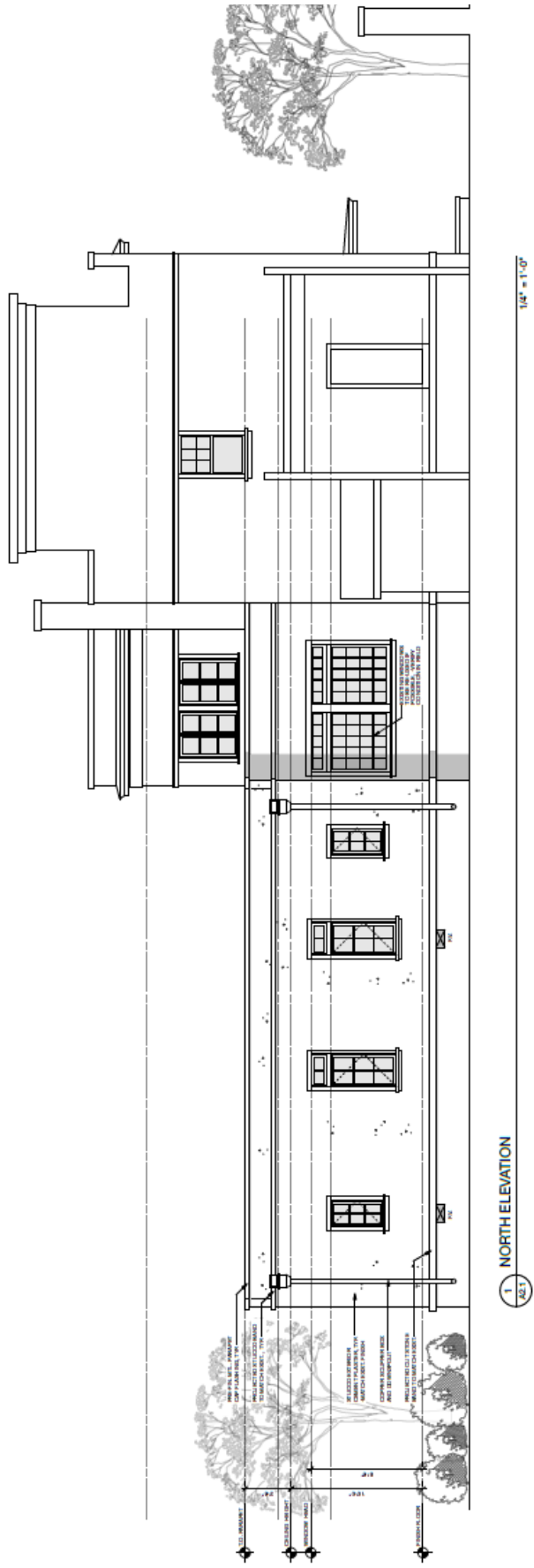
1 REFLECTED CEILING PLAN
1/4" = 1'-0"

ELECTRICAL LEGEND	
SYMBOL	TYPE
[Symbol]	RECESSED DOWN LIGHT
[Symbol]	MOISTURE RESISTANT RECESSED DOWN LIGHT
[Symbol]	CEILING MOUNTED LIGHT
[Symbol]	WALL MOUNTED LIGHT
[Symbol]	ART LIGHT
[Symbol]	PENDANT
[Symbol]	CHANDELIER
[Symbol]	FLOOD LIGHT
[Symbol]	DUPLEX RECEPTACLE IN WALL
[Symbol]	DOUBLE DUPLEX RECEPTACLE IN WALL
[Symbol]	DUPLEX RECEPTACLE IN WALL - HALF HOT
[Symbol]	DUPLEX RECEPTACLE IN FLOOR
[Symbol]	GFI TYPE DUPLEX RECEPTACLE IN WALL
[Symbol]	GFI TYPE DOUBLE DUPLEX RECEPTACLE IN WALL
[Symbol]	GFI TYPE DUPLEX RECEPTACLE IN WALL 42" A.F.F.
[Symbol]	GFI TYPE DOUBLE DUPLEX RECEPTACLE IN WALL 42" A.F.F.
[Symbol]	GFI TYPE DUPLEX W/ WET AREA RESISTANT RECEPTACLE IN WALL - WATERPROOF COVER
[Symbol]	SINGLE POLE SWITCH
[Symbol]	3-WAY SWITCH
[Symbol]	4-WAY SWITCH
[Symbol]	TELEPHONE OUTLET IN WALL - VERIFY HEIGHT w/ OWNER/ARCHITECT
[Symbol]	TELEPHONE OUTLET IN FLOOR
[Symbol]	COMBINATION TELEPHONE/DATA OUTLET IN WALL - VERIFY HEIGHT w/ OWNER/ARCHITECT
[Symbol]	COMBINATION TELEPHONE/DATA OUTLET IN FLOOR
[Symbol]	TV - PROVIDE POWER & DATA - VERIFY HEIGHT w/ OWNER & ARCHITECT
[Symbol]	EXHAUST FAN
[Symbol]	COMBINATION EXHAUST FAN/LIGHT
[Symbol]	GARAGE DOOR OPENER
[Symbol]	CEILING FAN
[Symbol]	CEILING FAN w/ LIGHT KIT

Elevations

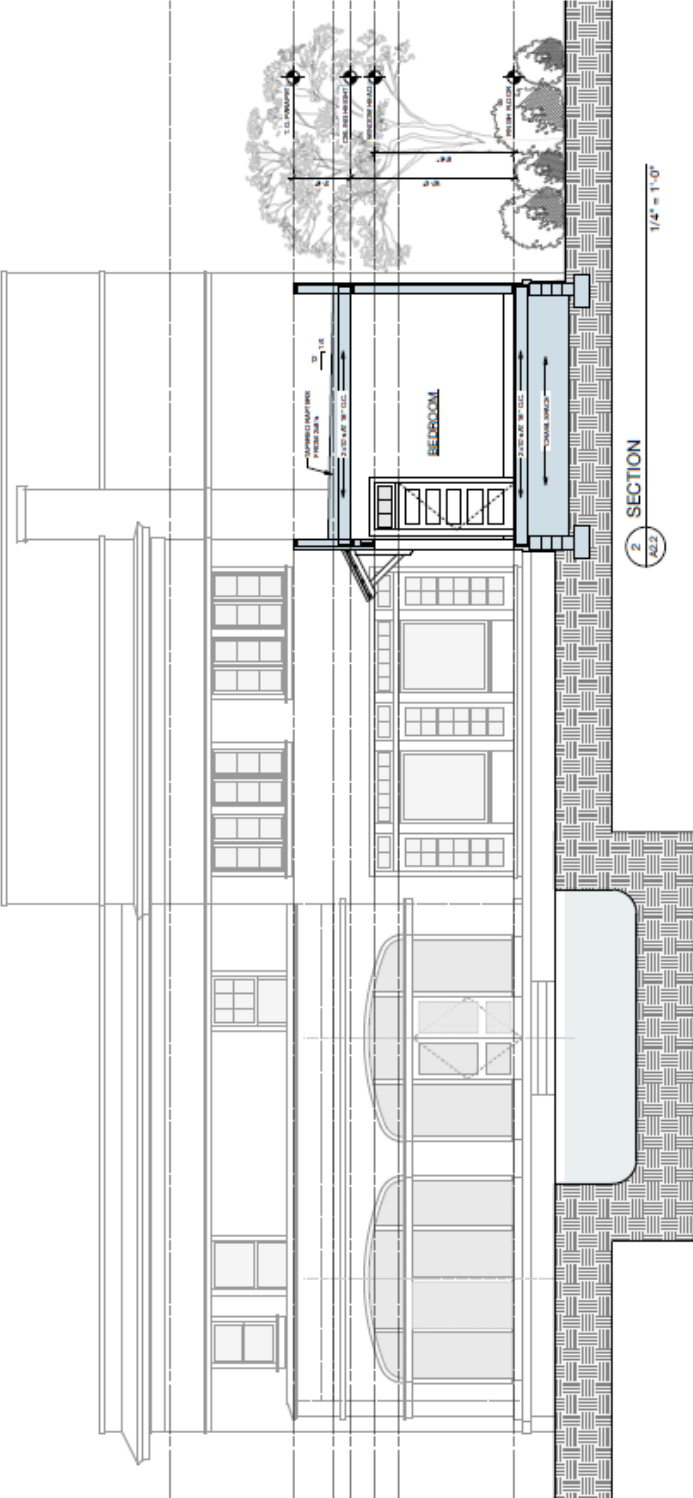


2 SOUTH ELEVATION
1/4" = 1'-0"

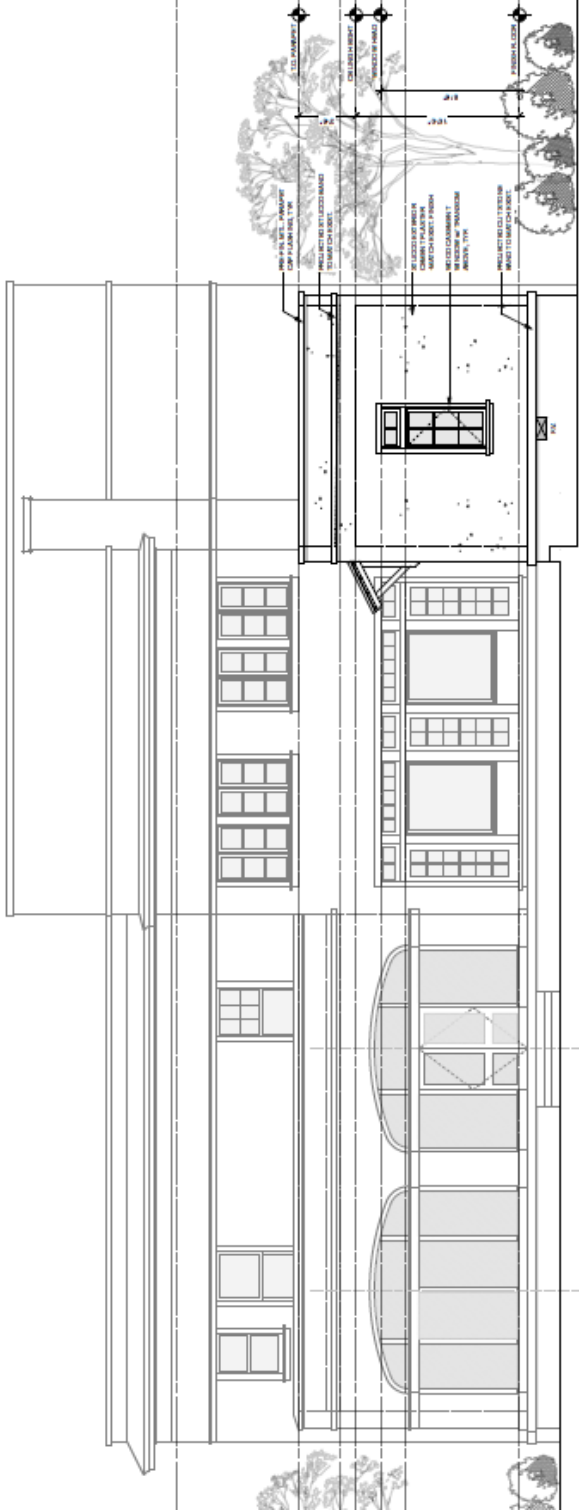


1 NORTH ELEVATION
1/4" = 1'-0"

Elevations (continued)



2 SECTION
1/4" = 1'-0"



1 EAST ELEVATION
1/4" = 1'-0"