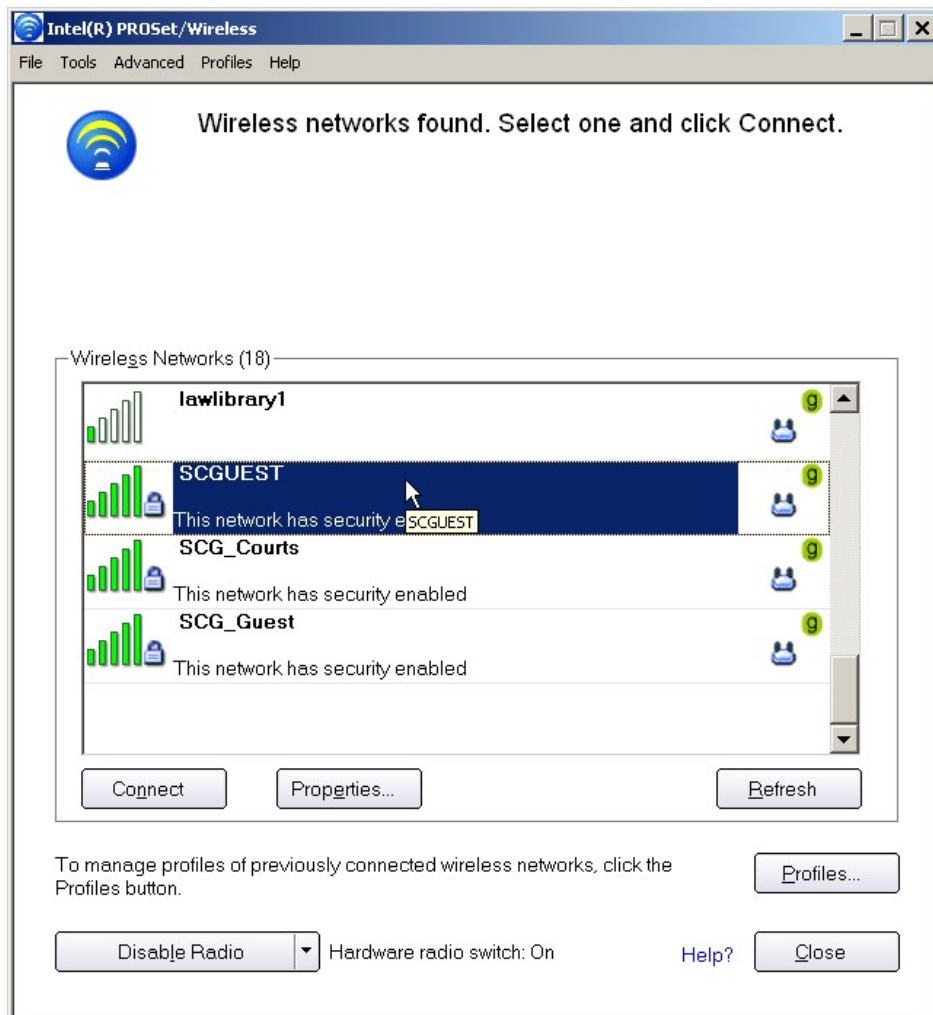


SHELBY COUNTY COURTS' GUEST WIRELESS—INSTRUCTIONS

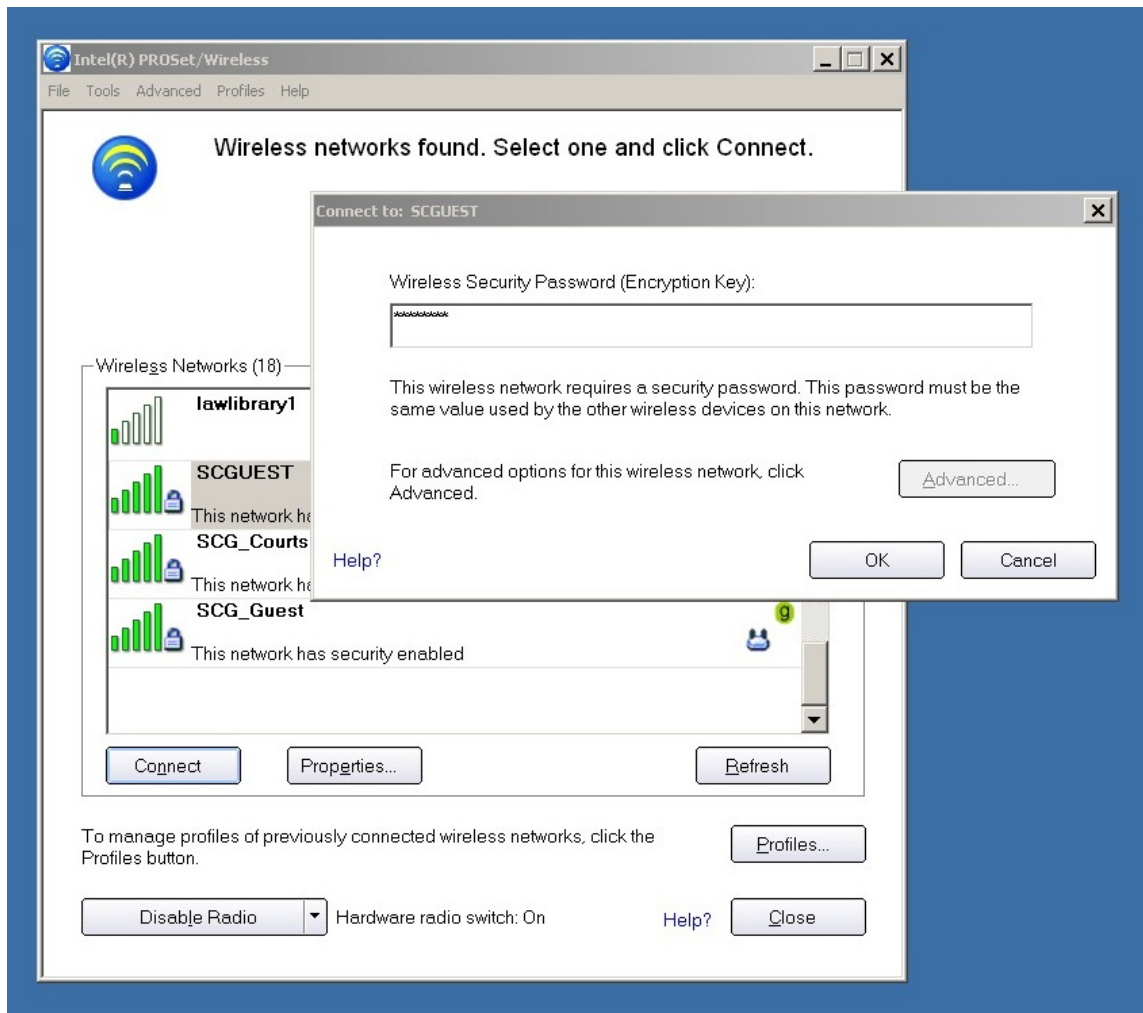
Below are instructions for logging into Shelby Courts' Guest Wireless network. The screen shots are only a representation of a typical laptop's wireless software. Your system may look and be configured differently. The **SCGUEST** network requires a security key to be configured on your device every calendar month, because each month the key changes. You can obtain the current month's security key from either Circuit or Chancery Court's filing counters. Your Wireless Account will expire one week after you register and use your account. After expiration, repeat the steps below to re-activate access for another week.

Locate the 'Wireless Network Main screen' on your device. The screenshot below shows an example of such a screen. Click '**SCGUEST**' as shown, and the 'Connect' button.

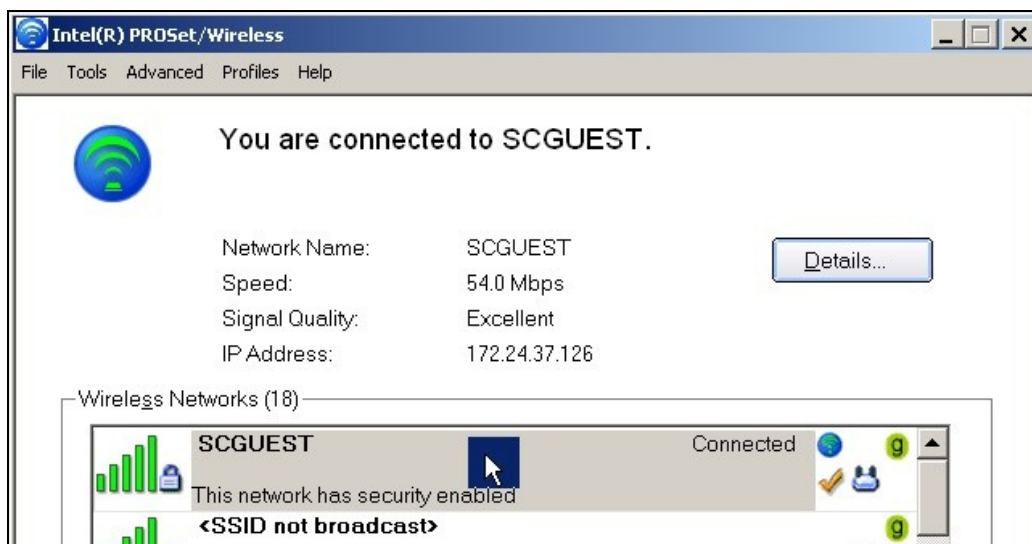


A box will appear as in the screenshot below.

Enter the current month's Encryption Key. The key is case sensitive.



You have now authenticated your device for the current month, and you will see the confirmation that you are connected to **SCGUEST**.



You must register as a Guest to use [SCGUEST](#) wireless network. Follow the screenshots and steps below to register and access the Internet.

After authenticating to the network as shown in the previous steps, you will be presented a login screen as shown below. If you have already registered for the week, use your login and password information to access the Internet. If you haven't registered, click the 'Register' link as shown.

The screenshot shows a web page titled "Login" with a blue header. Below the header, there are links for "Register", "Forgot Password", and "Help". A mouse cursor is pointing at the "Register" link. The main content area says "Dear Guest," followed by instructions to enter a User Name (email) and password. There are two input fields: "User Name (Email)" and "Password". A "Login" button is located at the bottom right of the form area.

You will be taken to a registration screen. Complete the form and click 'Register'.

The screenshot shows a web page titled "Guest Registration" with a blue header. Below the header, it says "Dear Guest," followed by a welcome message and instructions to complete the form and click the "Register" button. The form contains several fields: "*Email" (robert.terrell@lightspeed.net), "*Full Name" (Robert M. Terrell), "*Mobile Phone" (901-555-6565), "*Password" (masked with dots), "*Retype Password" (masked with dots), "Company" (LawLife Incorporated), and "Location" (140 Adams, 2nd floor). There is a checkbox for "I agree to the Terms of Service" which is checked. A "Register" button is at the bottom right, with a mouse cursor pointing at it. At the bottom left, there is a link: "Already registered? [Click here](#)".

A verification password will be sent instantly to your mobile phone as a text message, and emailed to the email address you entered on the form. Enter the password in the box provided, and click 'Submit'.

Verification Code Form

In order to proceed with the Guest Registration process, your identity should be verified. Please enter the Verification Code you received via Email or SMS.

Verification Code for robert.terrell@lightspeed.net

Your password verification will be confirmed. Click the 'Return to Login Page' link.

Verification code confirmed

Verification code was successfully confirmed.

[Return to Login Page](#)

At the login page, enter your email address as your user name, and the password you chose during registration. Click the 'Login' button.

Login

[Register](#) | [Forgot Password](#) | [Help](#)

Dear Guest,

In order to connect to the Shelby County Guest Wireless network, please enter your User Name (email) and password below.

User Name (Email)

Password

After clicking Login, you will see the screen shown below, confirming you are connected. Click the 'Continue browsing in a new window' link to access a browser and the Internet.

Shelby County Guest Wireless Login Session

You are now Logged In as robert.terrell@lightspeed.net

Logout

[Continue browsing in a new window](#)

After you have finished your session, click the 'Logout' button to log out, and disconnect from the SCGUEST network by clicking the 'Disconnect' button on your Wireless Network main screen.

